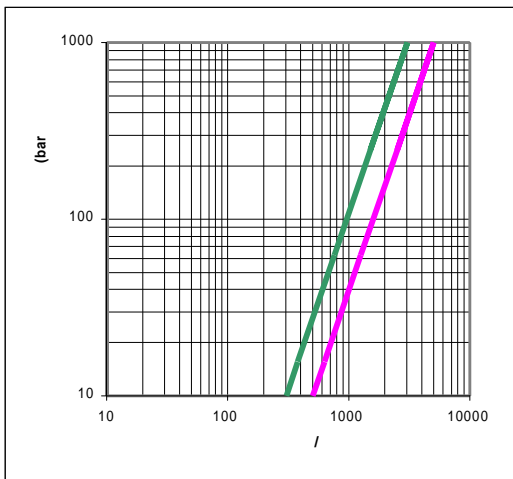
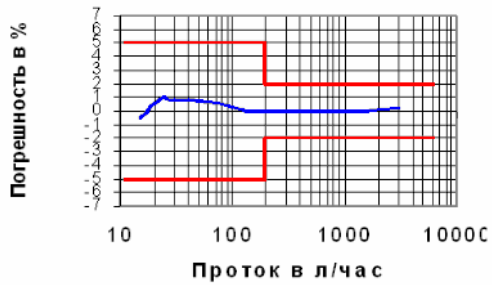




SCAMPY

Типичная кривая погрешности



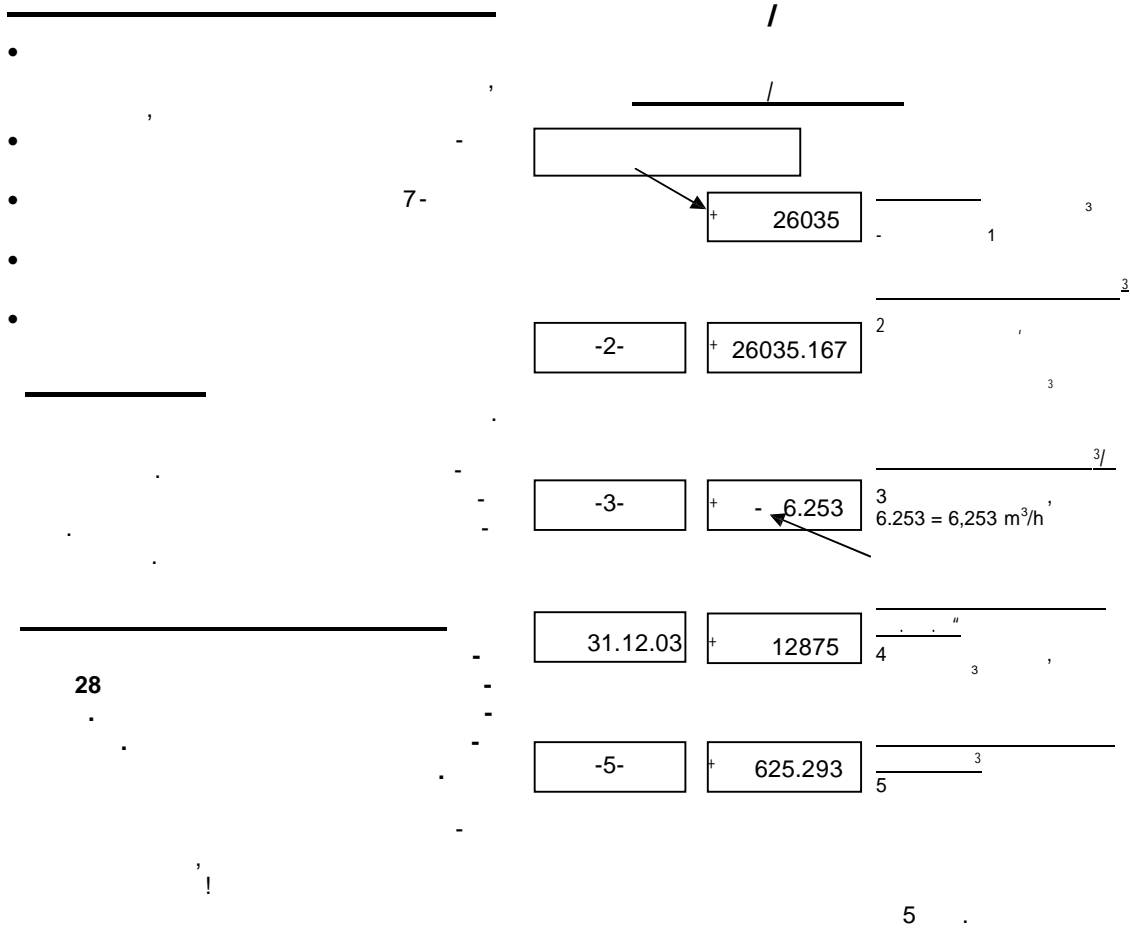
- 30 °C
- 90 °C
-
-

- < 3 /
- : 1,5
-
-

- M-Bus
- M-Bus
-
- PTB
- EO (PTB-A 6.1, PTB- A 6.3) : A;B;C
- (Qmin/Qn 1:100)
- /
- 000
- r

- 12
-
- LCD 10 ()
-

- M-Bus-
-
-



28

M-Bus.

SCAMPY

31.12.XX.

10

M-Bus

M-Bus -

- HYDRO-SET

M-Bus

-
-
-

- HYDRO-CENTER

M-Bus

25, 60

250

2 MByte

PC (RS232),

M-Bus (RS 232)

Repeater

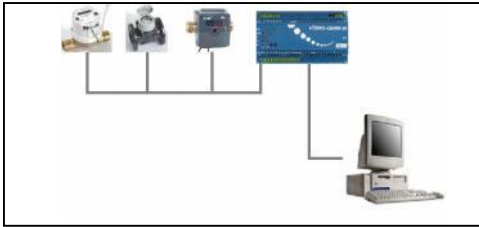
- HYDRO-NET

Client-Server Architektur

SQL

			1,5	
		Qmax	3	3/
		Qn	1,5	3/
		Qmin	15	/
	Qn	Δp	243	.
	0,1		930	/
	1		3.050	/
			< 3	/
			6	/
		PN	10	
			R ½	
		DN	15	
			110 / G¾ B	/
			95	
			IP 65	
	M-Bus		IP 44	
			800	

. 1:

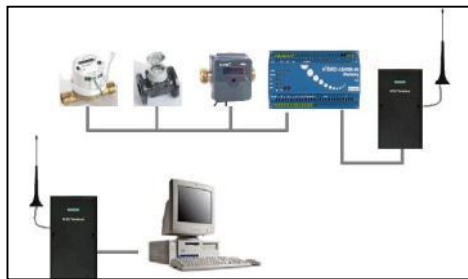


M-Bus
CENTER

HYDRO-

HYDRO-NET

. 2:

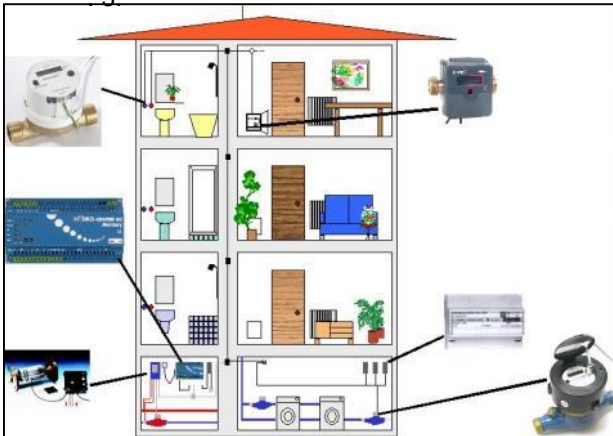


M-Bus
HYDRO-CENTER

(
GSM)

LAN-

. 3:




M-Bus


HYDRO-CENTER


GSM)

LAN-

742/743

	-					
	1		520287			

	-					
	1		803361			

	-					
	1		520593			

:

			Qn/DN	PN			M-Bus ..-
742	M-MKF3MB		Qn 1,5	16	bis 30°C	. B	74200033
743	M-MKF3MB		Qn 1,5	16	bis 90°C	. B	74300016